



HUNG TA INSTRUMENT CO., LTD.

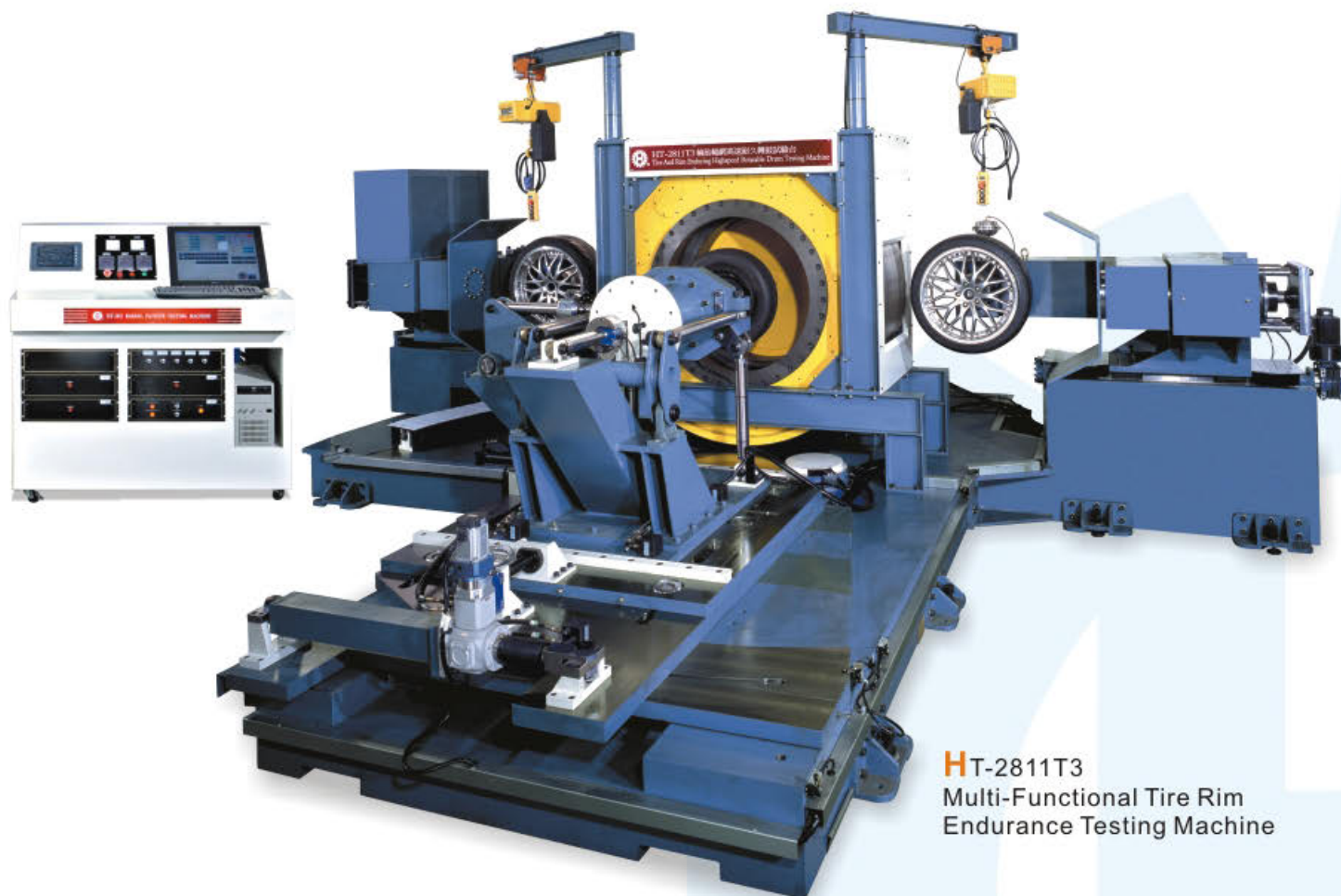
Tire & Wheel Testing Machine



Advanced Testing Systems
helping engineers worldwide develop safer,
more reliable materials and components.



HT-2811T3 Tire and Rim Endurance Highspeed Rotatable Drum Testing Machine



HT-2811T3
Multi-Functional Tire Rim
Endurance Testing Machine

A. Testing purpose

Conforming to the standard of **SAE J2562**, much closer to the real running condition of road wheels, in order to understand its feature of endurance.

	1 st Station	2 nd Station	3 rd Station
Suitable diameter of wheels	12" ~ 32"		12" ~ 26"
Maximum radial loading	35 kN / 50 kN / 100 kN (or as request)		20 kN , Axial load 15 kN (or as request)
Maximum testing speed	35 ~ 350 km/hr		
Size of steel drum	Ø 1707 mm ± 1% , width 500 mm		In-wheel diameter : 1000 mm
Camber angle	± 10° , accuracy ± 0.1°	Only for radial endurance test	+10° , -5° , accuracy ± 0.1°
Slip angle	± 10° , accuracy ± 0.1°		
Braking mechanism	Pneumatic disk braking device		

B. Testing Requirements

1、Inside drum test:

Suitable wheel: O.D. 500~800mm × W100~220mm

Suitable rim: 12" ~ 17" with testing tyre

Remarks: According to the standard of SAE J2562, the tire outside diameter is within 50% to 80% of the drum internal diameter. The diameter of the drum is 1000 mm, so the suitable range of wheel diameter is within 500~660 mm, or we can manufacturer as per your special requests.

2、According to the standard of SAE J2562 《Biaxial Wheel Fatigue test》, The tire-wheel assembly can be tested by radial load only, or radial load and lateral load simultaneously. Camber angel can be adjusted freely and be convenient for moutning different sizes of wheel samples. For maximum loading, it is:

Radial loading: 0~20 kN

Axial loading: 0~15 kN

C. Functional parameters

1、Steel drum

a. Inside diameter: 1000 ± 1% (or as requested)

b. Width: inside 500 mm, including curb (or as requested)

c. Suitable range of wheel sample:

O.D. 500~800 mm × W160~260 mm

(or the samples supplied by buyer with related tire assembly)

d. Dynamic unbalance: ISO G2.5 class

e. Range of speed: 0~900 rpm ±1%

f. Accuracy of rpm sensor: ±0.1 rpm

2、Driving method of steel drum: Servo motor

3、Radial loading mechanism of the first and the second station

a. Driven by servo motor

b. Static control accuracy: ±1%

c. Radial loading can be 35, 50, 100 kN or as requested.

d. Slip angle / Camber angle: ±10° (or as requested)

e. Lubricating system: automatic from the bearing box of steel drum.

f. Load sensor: 35, 50, 100 kN (or as requested.)

4、Radial and axial loading mechanism of the third station

a. Driven by servo motor

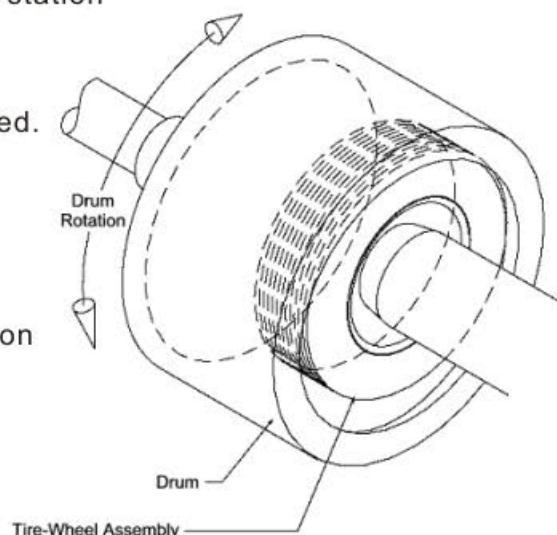
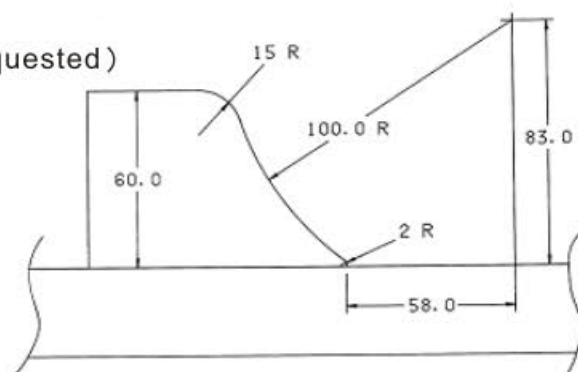
b. Axial load measuring accuracy: ±1%

c. Axial load: Max. 15 kN (available to preset),
camber angle +10°, -5°.

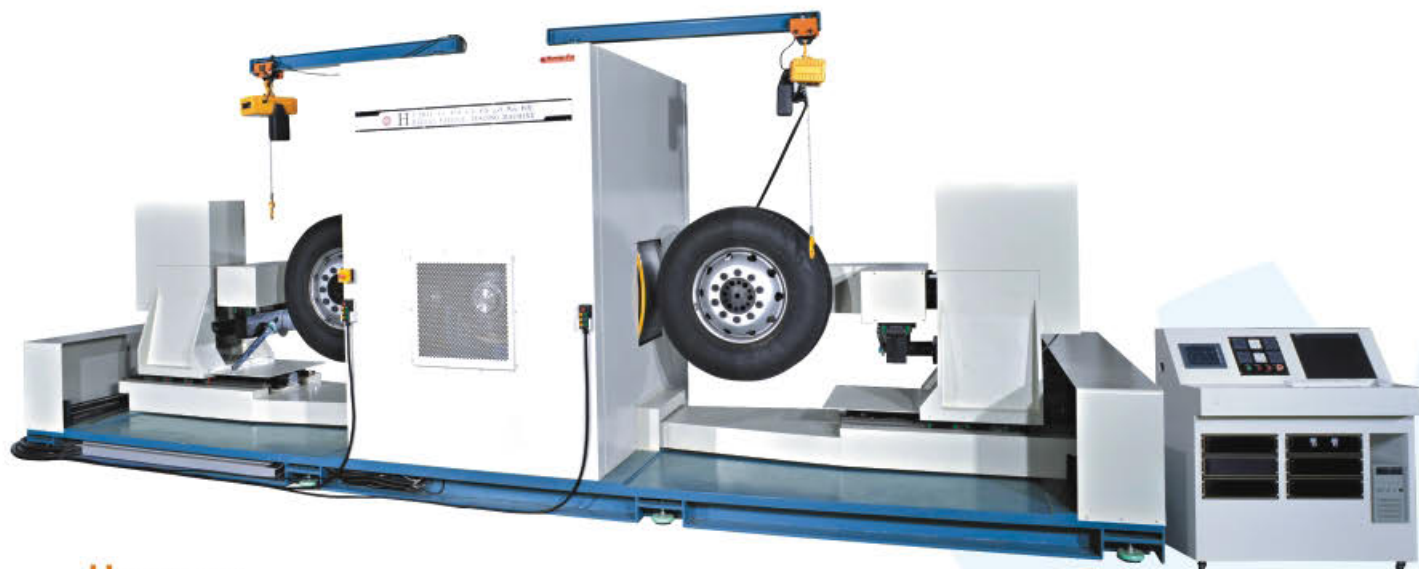
d. Lubricating and cooling system: automatic from the bearing box of steel drum.

e. Load censor: 50 kN load cell.

5、Braking device: Disk type braking



HT-2811 Radial Fatigue Testing Machine



HT-2811T5
Radial Fatigue Testing Machine



HT-2811T10
Radial Fatigue Testing Machine



Camber Angle



Slip Angle

HT-2811 Radial Fatigue Testing Machine

		Endurance test		High speed test	
		W	WR	T	TR TP TM (as requested)
Suitable wheel size		12" ~ 24"	12" ~ 26"	Ø350 ~ Ø1000 mm	Ø350 ~ Ø1400 mm
Max. radial loading		50 kN	100 kN	50 kN	100 kN
Max. test speed (adjustable)		10 ~ 150 km/hr (or as requested)		35 ~ 350 km/hr (or as requested)	
Radial loading mechanism	No. of specimen	2 stations		Biaxial	
	Loading deviation	± 2.5% 以内			
	Steel drum	Ø 1700 mm ±1% , width 500 mm (dynamic balancing conforms to JIS grade 2.5)			
	Camber angle	± 15° , accuracy ± 0.1°			
	Slip angle	± 15° , accuracy ± 0.1°			
	Braking mechanism	Pneumatic disk braking			
Temp control device		Rotating wheel temperature to be held at ± 38.3℃ (optional)			
Auto lubricating device		Temperature detecting and auto lubricating device at the bearings of both sides of steel drum and spindles of wheels			
Tire lifting device		Electric lifting device with extended arm for wheel, both stations			
Emergency stop device		Equipped at control bench, available to avoid any emergency status			
Protection shield, door protection device		Protection shield at both sides of the frame, with auto shut down function when door is opened. (optional)			
Loading deviation setting function		Loading deviation greater than preset value, loading mechanism s unloading and giving alarm, flat tire detecting device, minimum preset minimum radius value, when tire is leaking or flat tire, loading mechanism would go unloading automatically			
Failure detecting device		Loading mechanism safety stroke preset with limit switch protection device, avoid clashing owing to out of control			
Viewing window		Viewing windows and lighting device at both testing areas (optional)			
Display of data		Mileage, spindle rotating speed, speed, timer, number of revolution, temperature			
Optiona I: special functions		1. Dynamic radius testing system : accuracy ± 0.3 mm			
		2.Static radius testing system : accuracy ± 0.3 mm			
		3. Tire surface temperature measuring system: after test ends and braking is finished, surface temperature of tire can be measured by infrared non-contact detectors. (adjustable mechanism device)			
		4. Tire rolling resistance measuring system: rolling resistance to be measured by load cell, and transporting to computer for further calculation.			
		5 · Tire inner pressure measuring and controlling system : Tire pressure measuring data transmitted to computer for display and storage.			
		6. Automatic digital tire inflating device: Indicator (LED display), memorizing function, maximum inflating pressure 170 psi, minimum inflating pressure 5 psi (accuracy ±1 psi)			

Special options : 1. Rolling resistance testing function, because of its special features, should be specially ordered at different price.
2. 200 kN can be manufactured as well at your special request and requirements

HT-2724-2 Motorcycle Cornering Fatigue Testing Machine



HT-2724-2
 Motorcycle Cornering Fatigue Testing Machine

	HT-2724-2
Conforming to	JASO T23-85、ISO 8644-2006
Capacity	200 ~ 2000 N·m
Maximum speed	600 rpm
Loading method	Pneumatic
Suitable testing wheel range	14" ~ 20"
Rotated by	Servo motor 11.0 kW
Size of sample mounting	850 mm
Braking	Pneumatic disk braking
Auto control	PLC control
Specimen fixture	Taylor make as per actual sample
Dimensions	1550 × 1632 × 1400 mm
Width adjustment of wheel rim	Electric up / down
Weight	3500 kg

HT-2724 Cornering Fatigue Testing Machine

- This equipment is designed and manufactured as per major international testing standards like CNS, REV, FEBI, JIS...etc.
- This equipment can be used by auto test, monitoring which saves your time and energy.
- This equipment is applicable for various wheel diameter and width, offset. Easy to mount your test sample that you don't have to insert or replace lots of spacers.



HT-2724
Cornering Fatigue Testing Machine

	HT-2724-10	HT-2724-20	HT-2724-35
Conforming to	CNS 7135、SAE T328、REV、FEB2005、JIS D4103		
Maximum capacity	10000 N-m	20000 N-m	35000 N-m
Speed	100 ~ 750 rpm		
Suitable range	11" ~ 19"	12" ~ 24"	12" ~ 26"
Specimen fixture	U type fixtures x 12 pcs.		
Mechanical braking	Resistor braking		
Generation of torque	CentrifugalCentrifugal		
Auto control	PLC Centrifugal		
Deflection sensor	Key-in setting, analog detecting sensor		
Sample mounting	Automatic centre alignment		
Rotating speed stability	±1 %		
Loading stability	±1 %		
Load detection	10000 N-m	20000 N-m	35000 N-m
Power of motor	5 KW	7.5 KW	11 KW
Vibration isolator	YS-5000S		
Dimensions (approx.)	150 x 150 x 150 cm	170 x 170 x 150 cm	170 x 170 x 150 cm

HT-2706TF Series Tire Stiffness Testing Machine

This equipment is designed and manufactured as per major international testing standards, which is a multi-functional tire testing machine for various testing scopes.

- Radial loading dry/wet friction test
- Radial loading stiffness test
- Radial loading latitudinal stiffness test
- Radial loading longitudinal stiffness test
- Radial loading Torque stiffness test
- Tread Coating Stiffness
(protrusion) test
- Radial loading resistor test
- Bead unseating test unseating
- Plunger test

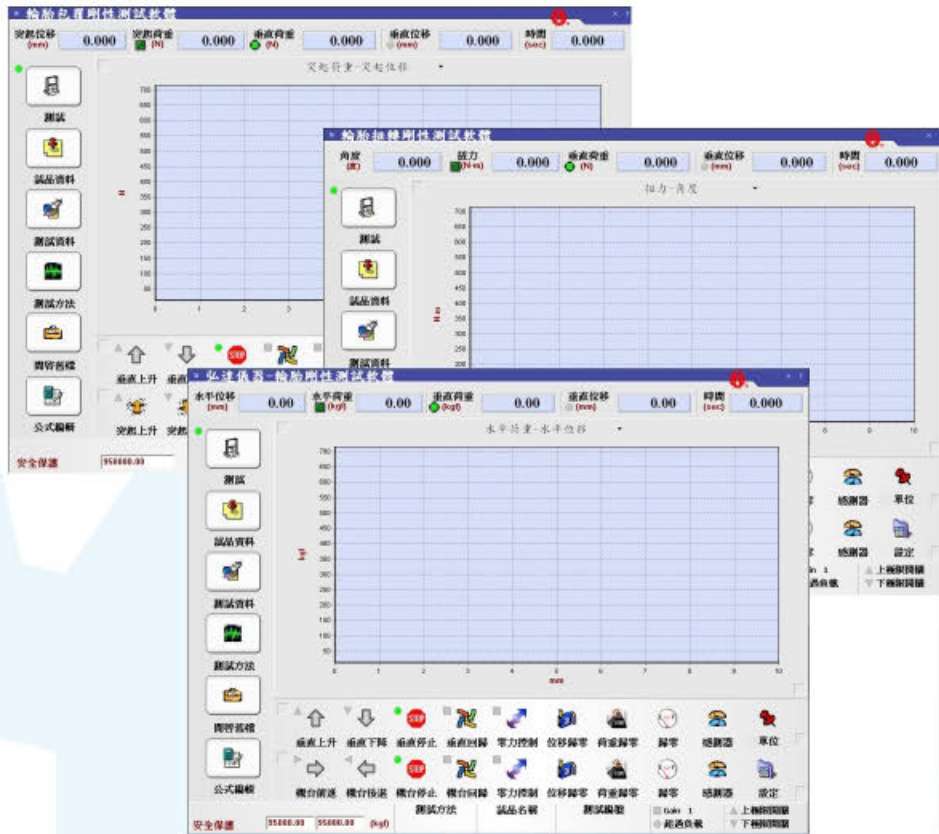


HT-2706TF
5 In 1 Tire Stiffness Testing Machine

	5-in-1 stiffness	Tire surface pressure analysis	Tire resistor detection
Type	TF5	TFA	TFΩ
Maximum capacity	20 / 50 / 100 kN		
Test speed	0.2 ~ 200 mm/min accuracy ± 0.02 mm		
Maximum size of wheel sample	Ø 400 ~ Ø 1500 mm , width 180 ~ 480 mm or as requested		
Stroke measurement	Max. 1500 , accuracy ± 0.1 mmaccuracy		
Controller	HUNG TA Interface		
Driving method	AC servo motor & servo driver		
Power	3 Ø 220 V / 380 V / 415 V , 50/60 Hz		

HT-2706TF Series

The Reports

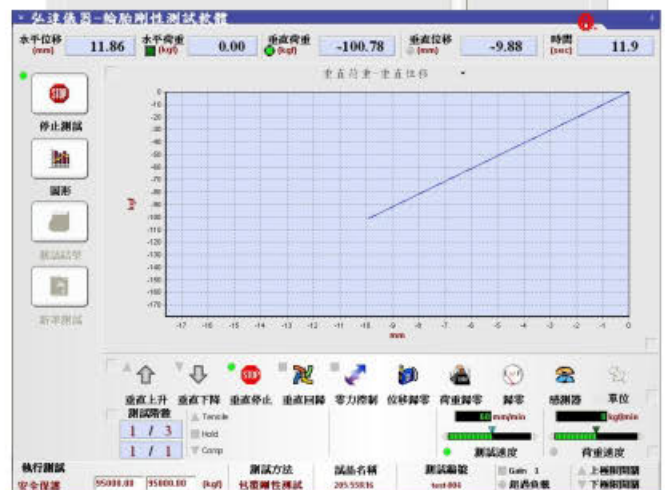


The figure shows two software windows. The top window, '試品資料' (Product Information), contains fields for tire specifications: '輪胎型號' (Tire Model), '胎寬' (Tire Width), '胎厚' (Tire Thickness), '輪胎用途' (Tire Use), '胎面寬(mm)' (Tread Width (mm)), '扁平率' (Aspect Ratio), '輪胎結構' (Tire Structure), '鋼圈直徑(in)' (Rim Diameter (in)), '輪胎最大荷重' (Maximum Tire Load), '荷重指數' (Load Index), '速度記號' (Speed Rating), '胎壓(psi)' (Tire Pressure), and '其他' (Other). The bottom window, '測試方法' (Test Method), shows a table of test parameters and a graph of Force vs. Displacement.

測試方法	測試項目	測試標準	測試結果	測試單位	測試時間	測試地點	測試人員	測試設備
1. 垂直上升	垂直上升	50.000	垂直上升	50.000	50.000	50.000	50.000	50.000
2. 垂直下降	垂直下降	50.000	垂直下降	50.000	50.000	50.000	50.000	50.000
3. 垂直停止	垂直停止	50.000	垂直停止	50.000	50.000	50.000	50.000	50.000
4. 垂直回彈	垂直回彈	50.000	垂直回彈	50.000	50.000	50.000	50.000	50.000
5. 零力控制	零力控制	50.000	零力控制	50.000	50.000	50.000	50.000	50.000
6. 位移歸零	位移歸零	50.000	位移歸零	50.000	50.000	50.000	50.000	50.000
7. 荷重歸零	荷重歸零	50.000	荷重歸零	50.000	50.000	50.000	50.000	50.000
8. 歸零	歸零	50.000	歸零	50.000	50.000	50.000	50.000	50.000
9. 感應器	感應器	50.000	感應器	50.000	50.000	50.000	50.000	50.000
10. 單位	單位	50.000	單位	50.000	50.000	50.000	50.000	50.000

The figure shows a software window titled '公式編輯' (Formula Editing). It contains a table of formulas for calculating tire properties. The table has columns for '公式名稱' (Formula Name), '公式' (Formula), '單位' (Unit), and '數量級' (Magnitude). The formulas are used to calculate various tire properties, including vertical stiffness, horizontal stiffness, and load capacity.

公式名稱	公式	單位	數量級
垂直剛性	F_{v1}/L_{v1}	N/mm	1
水平剛性	F_{h1}/L_{h1}	N/mm	1
垂直荷重	F_{v1}	N	1
垂直位移	L_{v1}	mm	1
垂直荷重	F_{v1}	N	1
垂直位移	L_{v1}	mm	1



HT-8041 RHI Road Hazard Impact Testing Machine

This equipment is designed and manufactured as per the testing standard of SAE J1981, which imitates the tire running on the road, and measure the effects of the pit and bumps impacting against the tire, in order to evaluate the tire being impacted, how road wheel can resist the change of tire pressure, and the damage to the tire.

- Pendulum impact length: 1828.8 mm, can be extended to 2028.8 mm, with a 54 kg weight drop hammer at the end of pendulum, swinging radius of 1835.2 mm
- Automatic pendulum lifting and release device
- Hammer angle adjustment: X axis $\pm 30^\circ$, Z-axis $\pm 85^\circ$
- Pendulum test angle: Max. 179°
- The weight of pendulum plus drop hammer: 164 kg
- Drop hammer falls at 5° position, the impact speed of 23.33 km / hr
- Test tire specifications: tire outside diameter 300 ~ 1000 mm
- Barometric pressure sensing device, with measurement accuracy: 0.5%
- Accelerometer, with measurement accuracy: 1%
- Computer generating factors: tire pressure, acceleration and control parameters
- Protection shield (optional)



HT-8041RHI
Tire Impact Testing Machine



HT-2912 Tire Rim Impact Tester

- 13 degrees Tire rim impact tester – manufactured as per the standard of GB, ISO, SAE, JIS and VIA.
- 30 degrees Tire rim impact tester – manufactured as per the standard of JIS and VIA.

Applicable specifications : This machine can conduct tests as per the standards of GB, ISO 7141, SAE J175, JIS D4103. Testing range: 12"~26" for wheel diameter and 4"~12" for the width.



HT-2912
Tire Rim Impact Tester

	HT-2912-13	HT-2912-30
Impact angle	13°	30°
Overall weight of hammers	1055 kg	1010 kg
Main hammer weight	350 kg	910 kg
Aux hammer weight	13 x 50kg、4 x 10 kg、3 x 5 kg	100 kg、62 kg (excluding weight of springs)
Size of impact surface	375 (L) x150 (W) cm	380 (L) x152 (W) cm
Up/Down speed control range	0 ~ 2 m/sec	0 ~ 2 m/sec
Falling height \geq	300 mm	500 mm
Power of motor	2 HP	2 HP
Power	3 Ø 220 V / 380 V / 415 V、50/60 Hz or as request	
Working air pressure	4 ~ 6 kg / cm ²	4 ~ 6 kg/cm ²
Dimensions (WxDxH)	1950 x 2200 x 3250 mm	1950 x 2200 x 3250 mm

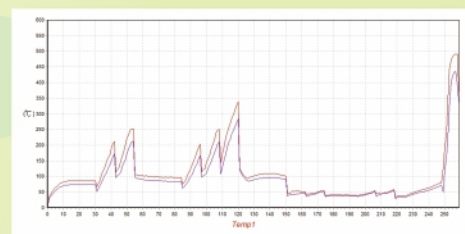
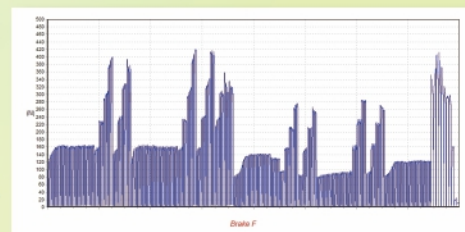
HT-1438 Series

Inertia dynamometer friction behavior assessment for brake system

Machine applies the simulation of Inertia dynamometer function to measure the friction of the brake disc's performance.

Using the large servo motor and clutch to increase or less the loading of Inertia to simulate the Inertia dynamometer.

System also measures the rotating torque and concerns the conditions such as real road situations, spray system, wind system and temperature measurement.



HT-1438		I15	I50
Rotating torque (N-m)		200	500
Testing speed (km/h)		Max : 60	Max : 100
Accuracy of control speed (%)		±5	±5
Active servo motor + clutch system		15 kW	20 kW
Dynamometer inertia (kg*m ²)		2 - 15	10 - 50
Alternative way for dynamometer inertia (1kg*m ² * 13 sets)		Manual adjustment	Manual adjustment
Grips		Brake disc one set	Brake disc one set
Testing space WxHxD (mm)		600 x 600 x 600	
Spray system (ml/sec)		>4	
Infrared temperature measurement		Max : 950 °C	
Wind system m/sec		4 ~ 17	
Hand bar force	Electro-servo motor drive (N)	500	2000
	Force transducer (N)	500	2000
	Stroke (mm)	50	50
Control and data acquisition system	Computer	PC one set	
	Controller	HUNG TA interface system	
	Software	Brake disk software, one set, testing functions as attachments	
Dimension (LxHxW)	Machine (mm) about	2760 x 1770 x 1280	
	Weight (kg) about	2000 kg	2500 kg
Safety protection		Overload protection, Electricity leakage, Emergency button...etc.	
Standard accessory		Tool kit, operation manual, calibration report, Warranty certificate.	
Power		3ø / 220V / 60Hz or 3ø / 380-415V / 50Hz	

Specification if change, not inform individually.



Hung Ta
Instrument Co., Ltd.
advanced material and component testing instrumentation

Headquarters & Factory

No. 20, Jingke Central Rd. Nantun Dist., 40852 Taichung City, Taiwan

TEL : +886-4-23590108

FAX : +886-4-23593110, 23588599

Int'l hotline : +886-933-208585

E-mail : info@hungta.com

Website :

www.hungta.com

www.hungta.com.tw

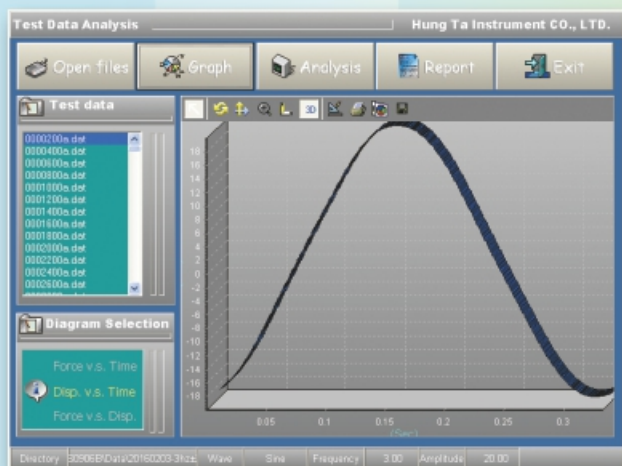
www.hungta.com.cn

HT-1231-2CH Series *Dynamic Fatigue Testing Machine*

Machine conforms to ISO/EN/ABNT/NBR/CNS/GB/CPSC, etc. standards for bicycle testing. Powered by electrodynamics, the machine is suitable for the dynamic, static, compression, and tension testing of various bicycle components. The ergonomically designed machine comes with complete features and offers great versatility. It is easy to install and operate, ideal for R&D or for quality control management.

Features :

- Environmentally friendly, power saving, noise-free
- Actuator provides stable force during dynamic and / or static testing.
- Satisfies ISO 4210-6 Sec. 4.3 Fatigue Test with Pedaling Forces



HT-1231-2CH		S5				S10			
		V3	V6	V3NI	V6NI	V3	V6	V3NI	V6NI
Dynamic force (N)		±5000				±10000			
Static force (N)		±3700				±7500			
Stroke of actuator (mm)		±50				±50			
Max linear velocity V(m/s)		0.3	0.6	0.3	0.6	0.3	0.6	0.3	0.6
Accuracy of load		±1%				±1%			
Displacement sensor (mm)		Max : 100				Max : 100			
		Resolution : 0.005				Resolution : 0.005			
Control & data acquisition system	Computer	PC one set				PC one set			
	Controller	HUNG TA interface		NI interface		HUNG TA interface		NI interface	
	Software	Dynamic software x 1		LABVIEW Software x 1		Dynamic software x 1		LABVIEW Software x 1	
Power system	Electro-servo-cylinder	Servo Motor & Servo Controller				Servo Motor & Servo Controller			
Adjustment for electro-cylinder	Left and right (mm)	150 - 750							
	Up and down (mm)	MAX : 1000							
Crosshead rise and down		Electrical (for quick adjustment)							
Crosshead fasten system		Manual							
Machine main body	Internal space (mm)	~ 1000 x 1000 x1600							
	Weight (kg)	~ 1120 kg							
Control cabinet	Dimension (mm)	~ 700 × 900 × 1750							
	Weight (kg)	About 150 kg							
Safety & protection		Overload protection, Leakage protection, Emergency switch, Limiter protection							
Standard accessory		Tool Kit, Operation manual, Calibration report, Warranty							
Power		3ø / 220 V / 50 / 60 Hz (380V / 415V, customized)							
Optional accessory		Grips : HT Catalogue standard / Customized to customer's specimen							

1. Specifications subject to change without further notice.

2. Hung Ta compression springs used for trial tests and inspection process.

Performance determined by testing parameters such as frequency and amplitude, and may vary with properties of materials tested as well as other environmental factors



Hung Ta
Instrument Co., Ltd.
advanced material and component testing instrumentation

Headquarters & Factory

No. 20, Jingke Central Rd. Nantun Dist., 40852 Taichung City, Taiwan

TEL : +886-4-23590108

FAX : +886-4-23593110, 23588599

Int'l hotline : +886-933-208585

E-mail : info@hungta.com

Website :

www.hungta.com

www.hungta.com.tw

www.hungta.com.cn

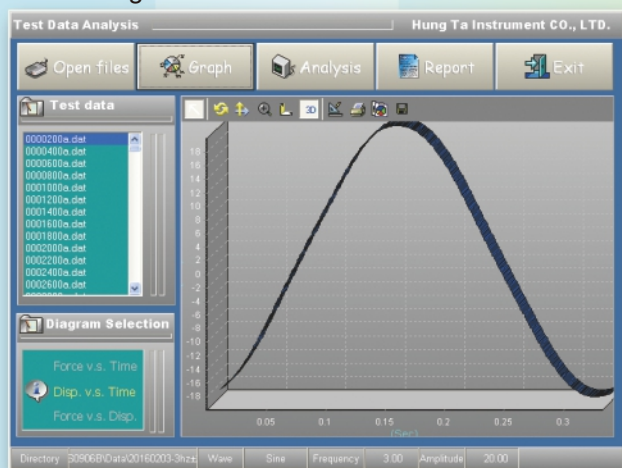
HT-1231-B2 Series

Dynamic Fatigue Testing Machine

Machine conforms to ISO/EN/ABNT/NBR/CNS/GB/CPSC, etc. standards for bicycle testing. Powered by electrodynamics, the machine is suitable for the dynamic, static, compression, and tension testing of various bicycle components. The ergonomically designed machine comes with complete features and offers great versatility. It is easy to install and operate, ideal for R&D or for quality control management.

Features :

- Environmentally friendly, power saving, noise-free
- Actuator provides stable force during dynamic and / or static testing.
- Satisfies ISO 4210-6 Sec. 4.3 Fatigue Test with Pedaling Forces



HT-1231-B2		S5				S10			
		V3	V6	V3NI	V6NI	V3	V6	V3NI	V6NI
Dynamic force (N)		±5000				±10000			
Static force (N)		±3700				±7500			
Stroke of actuator (mm)		±50				±50			
Max linear velocity V(m/s)		0.3	0.6	0.3	0.6	0.3	0.6	0.3	0.6
Accuracy of load		±1%				±1%			
Displacement sensor (mm)		Max : 100				Max : 100			
		Resolution : 0.005				Resolution : 0.005			
Control & data acquisition system	Computer	PC one set				PC one set			
	Controller	HUNG TA interface		NI interface		HUNG TA interface		NI interface	
	Software	Dynamic software x 1		LABVIEW Software x 1		Dynamic software x 1		LABVIEW Software x 1	
Power system	Electro-servo-cylinder	Servo Motor & Servo Controller				Servo Motor & Servo Controller			
Adjustment for electro-cylinder	Left and right (mm)	150 - 750							
	Up and down (mm)	MAX : 600							
Crosshead rise and down		Electrical (for quick adjustment)							
Crosshead fasten system		Manual							
Machine main body	Internal space (mm)	~ 1000 x 1000 x1000							
	Weight (kg)	~ 1120 kg							
Control cabinet	Dimension (mm)	~ 700 × 900 × 1750							
	Weight (kg)	About 150 kg							
Safety & protection		Overload protection, Leakage protection, Emergency switch, Limiter protection							
Standard accessory		Tool Kit, Operation manual, Calibration report, Warranty							
Power		3ø / 220 V / 50 / 60 Hz (380V / 415V, customized)							
Optional accessory		Grips : HT Catalogue standard / Customized to customer's specimen							

1. Specifications subject to change without further notice.

2. Hung Ta compression springs used for trial tests and inspection process.

Performance determined by testing parameters such as frequency and amplitude, and may vary with properties of materials tested as well as other environmental factors



Hung Ta
Instrument Co., Ltd.
advanced material and component testing instrumentation

Headquarters & Factory

No. 20, Jingke Central Rd. Nantun Dist., 40852 Taichung City, Taiwan

TEL : +886-4-23590108

FAX : +886-4-23593110, 23588599

Int'l hotline : +886-933-208585

E-mail : info@hungta.com

Website :

www.hungta.com

www.hungta.com.tw

www.hungta.com.cn

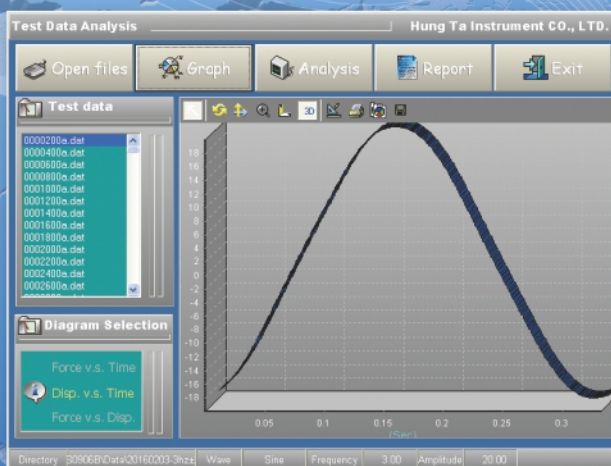
HT-1236 Series

Dynamic Testing Machine



This machine applies electro dynamics to power train, suitable for productions and raw material for executing test in dynamic, static, tensile, compression, torsion, conform with ergonomics.

Machines are easily installation and operation, be the best dynamic machine for selection for R&D fields.



HT-1236		E100			ET100			E500			E1000		
		V3	V6	V10	V3	V6	V10	V3	V6	V10	V3	V6	V10
Dynamic force (N)		±1000			±1000			±5000			±10000		
Static force (N)		±750			±750			±3700			±7500		
Max torque (N-m)					±50								
Max torsion angle					±360°								
Stroke of dynamic actuator (mm)		±50			±50			±50			±50		
Dynamic performance (Hz)		Max : 50											
Loading accuracy		±1%											
Encoder (mm)		Max : 100, Resolution : 0.002											
Max line speed rate V (m/s)		0.3	0.6	1.0	0.3	0.6	1.0	0.3	0.6	1.0	0.3	0.6	1.0
Crosshead upward & downward system		Driver by electron-system, quick adjustment											
Crosshead fasten system fasten system		Manual											
Control and data collection system	Computer	PC one set											
	Controller	HUNG TA interface											
	Software	Dynamic software, one set, UTM static software one set											
Dynamic system: electric servo cylinder	Servo motor	Servo motor & Servo driver control apparatus											
	Power consumption	1.0 kVA			1.0 kVA			1.0 kVA			2.0 kVA		
Dimension (WxDxH)	Main machine (mm)	About 752 x 750 x 1800											
	Weght (kg)	About 320 kg			About 320 kg			About 320 kg			About 330 kg		
Safety protection		Overload protection, Leakage protection, Emergency switch, Limiter protection											
Standard accessory		Tool Kit, Operation manual, Calibration report, Warranty, one set of each above											
Power		3ø/ 220V / 50 / 60 Hz											
Optional accessory		Grips : Designs base on the specimen dimension and need to create											
		Protection guard, customer provide the specimens.											

1. Specification if change, not inform individually.

2. Using the compressed spring from Hung Ta to inspection to be determined by the testing term frequency, amplitude, material conditions and surroundings.



Hung Ta
Instrument Co., Ltd.
advanced material and component testing instrumentation

Headquarters & Factory

No. 20, Jingke Central Rd. Nantun Dist., 40852 Taichung City, Taiwan

TEL : +886-4-23590108

FAX : +886-4-23593110, 23588599

Int'l hotline : +886-933-208585

E-mail : info@hungta.com

Website :

www.hungta.com

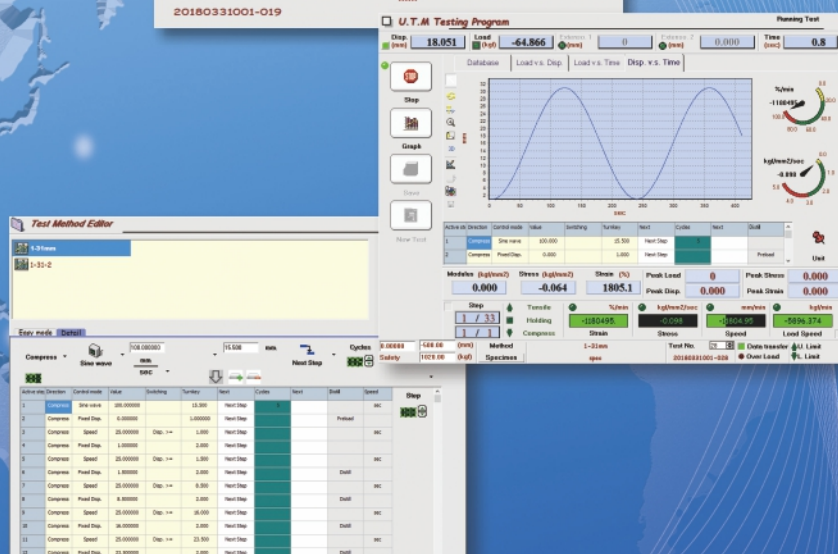
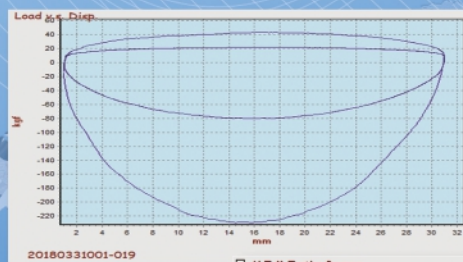
www.hungta.com.tw

www.hungta.com.cn

HT-1560EM Series *Damping Tester*



This machine uses Electric- servo cylinder to actuation, suitable for pre-force for shock absorbers, damping testing, and quality inspections and R & D for shock absorbers.



HT-1560		EM5V6	EM5V10	EM10V6	EM10V10
Max force (kN)		± 5	± 5	± 10	± 10
Force transducer (kN)		± 10	± 10	± 20	± 20
Accuracy		± 1%			
Encoder (mm)		Max : 100, Resolution : 0.002			
Max line speed rate V (m/s)		0.6	1.0	0.6	1.0
Stroke of electric cylinder (mm)		± 50	± 50	± 50	± 50
Grips		Mechanical / Hydraulic (Option)			Hydraulic
		# Apply replacement module apparatus			
		# Shape and designs of grips / fixtures customized by the customer's specimens			
Operation testing space (W x H mm)		380 x 600			
Crosshead upward / downward system		Driver by electron-system, quick adjustment.			
Crosshead fasten system		Manual			
Actuator	Servo motor	Servo motor & servo driver control apparatus			
	Power consumption	1.0 kVA	2.0 kVA	2.0 kVA	3.0 kVA
Control and data collection system	Computer	PC one set			
	Controller	HUNG TA interface card			
	Software	Hung Ta software, one set			
Dimension (WxDxH)	Main machine (mm)	752 x 750 x 2000			
	Weight (kg) about	320 kg	330 kg	330 kg	330 kg
Safety protection		Overload protection, Leakage protection, Emergency switch, Limiter protection			
Standard accessory		Tool Kit, Operation manual, Calibration report, one set of each above			
Power		3ø / 220V / 60 Hz or 3ø / 380-415V / 50 Hz			

Specification if change, not inform individually.



Hung Ta
Instrument Co., Ltd.
advanced material and component testing instrumentation

Headquarters & Factory

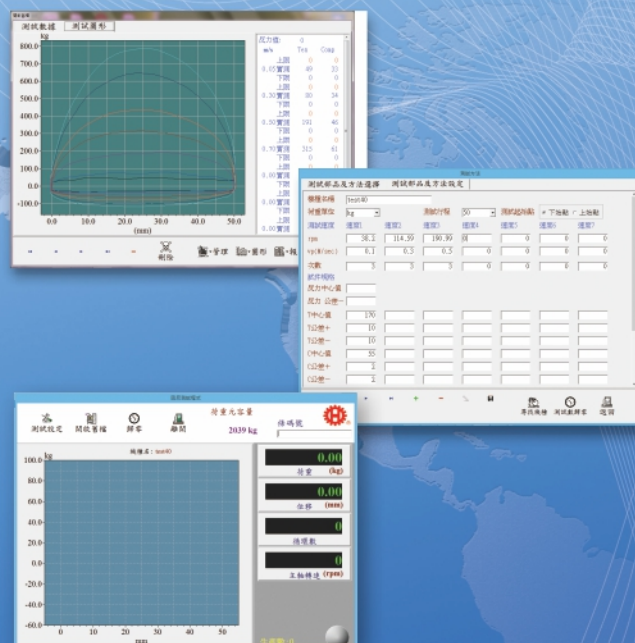
No. 20, Jingke Central Rd. Nantun Dist., 40852 Taichung City, Taiwan
TEL : +886-4-23590108
FAX : +886-4-23593110, 23588599
Int'l hotline : +886-933-208585
E-mail : info@hungta.com

Website :
www.hungta.com
www.hungta.com.tw
www.hungta.com.cn

HT-9760FL Series

Damping Tester

The tester applies servo motor to drive the eccentric wheel structure, low noise, faster testing pace, suitable for damping absorbers testing for automobiles, bikes industry. Either for production lines inspections and R&D fields.



HT-9760FL		FL5	FL10	FL20	LT20
Capacity (kN)		5	10	20	20
Line speed rate (stroke 50 mm calculation)		0.05 ~ 1.0 m/sec			
Accuracy of load		±1%			
Test stroke (adjustable) (mm)		0 ~ 100 mm			
		Eccentric wheel positioned firmly as : 20, 30, 40, 50, 75, 100 (special sized as 150/200)			
Grapping space (W x H) (mm)		About 200 × H	About 240 × 700 (Option for heightening type + 300 mm)		
Main power driver system		Servo motor + Servo control system			
Crosshead upward & downward system		Manual	Driver by electron-system, quick adjustment.		
Crosshead fasten system		Manual	Apply hydraulic auto release and / lock configuration		
Power system		Eccentric wheel structure			
Grips system HT-9760 GTW		Mechanical	Mechanical / Hydraulic (Selection one type)		Hydraulic
		#Apply replacement module apparatus			
		#Shape and designs of grips/ fixtures customized by the customers' specimens.			
		#Customers provide the specimen for application			
Computer operation and system control		# Re-set button # Main axis activation / stop button # Auto / manual button	Same as standard equipped function ; other features may customized.		
					Hydraulic grip line control case
Control and data collection	Controller	Hung Ta Interface			
	Computer	PC one set			
	Software	Damper test software one set			
Safety protection		Overload protection, Leakage protection, Emergency switch, Limiter protection			
Power		3ø / 220V / 60Hz or 3ø / 380-415V / 50Hz			
Power consumption		3.5 kVA	4.5 kVA	7.5 kVA	7.5 kVA
Dimension (W x D x H) (mm)	Main machine	About 600 x 600 x 1200	About 1000 x 950 x 2925		
	Control		About 700 x 900 x 1750		
	Weight	1200 kg	1500 kg	1500 kg	1500 kg

Specification if change, not inform individually. LT series: for production line usage.



Hung Ta
Instrument Co., Ltd.
advanced material and component testing instrumentation

Headquarters & Factory

No. 20, Jingke Central Rd. Nantun Dist., 40852 Taichung City, Taiwan
TEL : +886-4-23590108
FAX : +886-4-23593110, 23588599
Int'l hotline : +886-933-208585
E-mail : info@hungta.com

Website :
www.hungta.com
www.hungta.com.tw
www.hungta.com.cn



Website : **www.hungta.com**
www.hungta.com.tw
www.hungta.com.cn
www.hungtathai.com

HUNG TA INSTRUMENT CO., LTD.

Headquarters & Factory

No. 20, Jingke Central Rd. Nantun Dist.,
 Taichung City, 408, Taiwan
 TEL : +886-4-23590108
 FAX : +886-4-23593110
 E-mail : info@hungta.com

Sales & Service in China

TEL : +86-21-57744978
 FAX : +86-21-57744980
 Mobile : +86-139-16418127
 +86-139-17764730

Global Office

Taipei Office
 TEL : +886-2-27467770
 FAX : +886-2-27686430

Kaohsiung Office
 TEL : +886-7-3429618-9
 FAX : +886-7-3427499



Thailand Office
 TEL : +66-2-3120446-8
 FAX : +66-2-3120445

Malaysia Office
 TEL : +60-6-7636031
 FAX : +60-6-7637692

Vietnam Office
 TEL : +84-283-7517821

Indonesia Office
 TEL : +62-21-42884548, 42802050
 FAX : +62-21-42884558